



---

## Software and information tools for cartographic support of a mobile printing complex

COUNTRY OF ORIGIN	IDENTIFIER	PUBLISHED	LAST UPDATE	DEADLINE
Belarus	BO6289	2023-02-24	2023-02-25	

### Linked profile in other language

[Программно-информационные средства картографического обеспечения подвижного полиграфического комплекса](#)

### Responsible

Larisa Murashko

+375 29 284 8488

[lora@newman.bas-net.by](mailto:lora@newman.bas-net.by)

### Summary

United Institute of Informatics Problems offers consumers software and information tools for cartographic support of a mobile printing complex under a manufacturing agreement or an outsourcing agreement and is looking for partners to conclude a distribution services agreement.

### Description

The software and information tools for cartographic support of the mobile printing complex (MPC) were developed in the interests of increasing the efficiency of solving the tasks of providing troops and headquarters with topographic and geodetic information on a solid basis and in electronic form in the field.

Specialized software (SSW) for cartographic support of the MPC as part of three software and information systems solves the following functional tasks:

- \* drawing up special maps for military purposes and extended information about the area;
- \* formation and maintenance of a data bank of topographic and geodetic products;
- \* solution of accounting and operational tasks;
- \* automated preparation for the publication of topographic and special maps for military purposes;
- \* analysis of the operational and tactical properties of the terrain.

In terms of its functionality, the development has no analogues in the CIS, is not inferior to the best world analogues, is easy to learn and operate, supports domestic and foreign data presentation formats, has no restrictions on upgrading and expanding functionality.

### Advantages and Innovations

The use of SSW MPC allows you to reduce the costs of compiling special maps for military purposes and preparing them for publication, for obtaining design characteristics for terrain objects based on an extended

information about the terrain, as well as time spent when solving special problems. The developed tools can be used both on mobile complexes and in stationary conditions.

### **Stage of development**

Already on the market

### **Comments regarding stage of development**

The developed SSW as part of the MPC is intended to equip units of the navigation and topographic service of the Armed Forces of the Republic of Belarus.

### **Funding source**

State budgeted

Internal

### **IPR status**

Secret know-how

### **Sector group**

Aeronautics, Space and Dual-Use Technologies

ICT Industry & Services

## **CLIENT INFORMATION**

### **Type and size of client**

R&D institution

### **Year established**

1965

### **NACE keywords**

J.62.0 - Computer programming, consultancy and related activities

J.62.02 - Computer consultancy activities

M.72.19 - Other research and experimental development on natural sciences and engineering

M.74.90 - Other professional, scientific and technical activities n.e.c.

### **Turnover (in EUR)**

10-20M

### **Already engaged in transnational cooperation**

Yes

### **Additional comments**

United Institute of Informatics Problems of the National Academy of Sciences of Belarus is the leading organization in the Republic of Belarus for fundamental and applied research in the field of information technologies: design automation, applied mathematics, supercomputer technologies, bioinformatics and medical informatics, geographic information systems, digital cartography, information space technologies, Grid-

technologies. The Institute is a provider of the scientific and educational Internet in Belarus, participates in the development of recommendations on the use of the results of scientific research, scientific support for informatization processes in the Republic of Belarus, the development of forecasts in the relevant fields of science and technology, and the training of highly qualified personnel.

Scientific directions:

- automation of engineering systems design;
- processing and recognition of signals, images, speech;
- geoinformation systems;
- input and output of video information;
- operations research and discrete optimization;
- data protection;
- decision-making in emergency situations;
- bio- and medical informatics;
- computer networks, databases and telematic applications;
- supercomputer technologies and parallel computing, Grid technologies;
- information and reference systems.

The strategic goal of the UIIP NAS of Belarus is the creation and implementation of systems developed on the basis of modern scientific theories and methods of information technology. At the same time, the main directions are the development and creation of high-performance systems and advanced technical base of network technologies based on the principles of GRID and cloud computing. Integration of high-performance computing resources of the institute into the European and world network will create conditions for the export of services to other countries. Another important export factor should be the computing complexes and systems created in the laboratories of the institute and designed as a finished hardware and/or software product. The areas of application of these products are automation of the full life cycle of products in industry and electronics, medical informatics, space information systems, information systems in management and government, public information services, and others.

Along with the expansion of scientific and technical cooperation with partners from the CIS countries, Western and Eastern Europe, much attention was paid to expanding the geography of scientific and technical cooperation and entering new markets for scientific and technical products (China, the countries of the Persian Gulf and a number of other countries).

The strategic goal of the implementation of international projects is to increase the competitiveness of domestic scientific and technical products, their promotion to the world market, the maximum attraction of foreign investment in the research sector of the Republic of Belarus.

## **Languages spoken**

Russian

## **INFORMATION ABOUT PARTNERSHIP**

### **Type of partnership considered**

Distribution services agreement

Manufacturing agreement

Outsourcing agreement

### **Type and role of partner sought**

Consumers interested in purchasing software and information tools for cartographic support of a mobile printing

complex under a manufacturing agreement or the provision of cartographic support services under an outsourcing agreement.

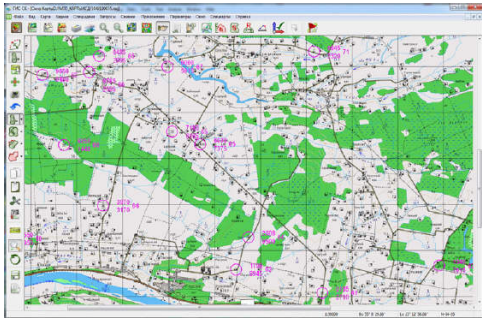
Partners interested in purchasing software and information tools for cartographic support of a mobile printing complex under a distribution services agreement.

## Type and size of partner sought

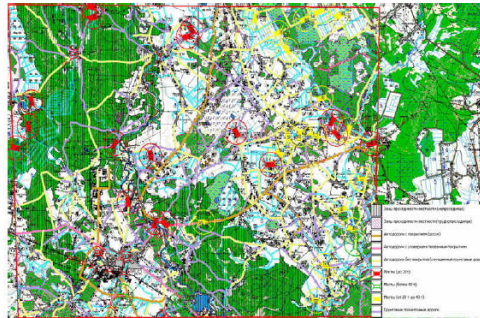
University

## ATTACHMENTS

[Cartographic support.jpg](#)



*Карта условий проходимости*



*Карта геоданных*